



Norman Grove, London, E3

BUTLER  STAG



Charming three bedroom Victorian terraced house set within a delightful conservation area in the heart of Bow.



- Three Bedroom Period House
- Close to Victoria Park and Roman Road
- Large South-West Facing Garden
- Part Furnished
- Conservation Area Location
- Mile End Underground Nearby
- Spacious Living / Dining Area
- Available from Early May 2025

Located on a quiet tree-lined street moments from the vibrant Roman Road and ever-popular Victoria Park, this house is well-served by excellent transport links including Mile End underground station and regular buses towards Shoreditch and the City.

Featuring a spacious reception room which opens out onto a south-west facing private rear garden, this wonderful house further comprises of a fully-integrated kitchen, three double bedrooms, contemporary bathroom and an additional guest WC.

Offered part furnished, this rarely available house is available from early May 2025.

EPC Rating D
Council Tax Band E





Norman Grove

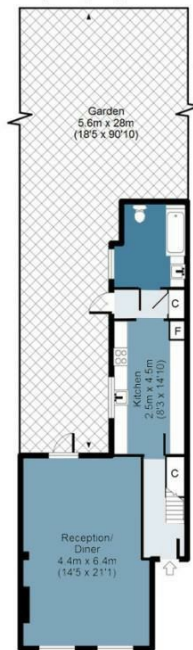
Approx. Gross Internal Area 97 Sq M (1039 Sq Ft)

BUTLER & STAG



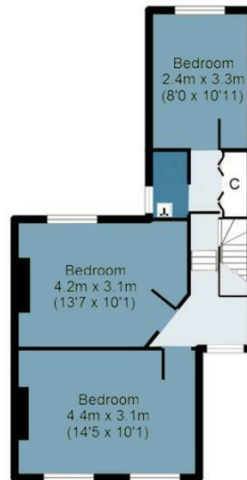
Ground Floor

Approx. 53 sq. meters
(574 sq. feet)



First Floor

Approx. 44 sq. meters
(465 sq. feet)



Measurements are approximate and for illustration purposes only. While we do not doubt the accuracy and completeness, we advise you conduct a careful independent assessment of the property to determine monetary value.

© @modephoto.uk www.modephoto.co.uk

IMPORTANT NOTICE - These particulars have been prepared in good faith and they are not intended to constitute part of an offer or contract. We have not performed a structural survey on this property and the services, appliances and specific fittings have not been tested. All photographs, measurements, floor plans and distances referred to are given as a guide and should not be relied upon.

BUTLER & STAG

☎ 020 8102 1236

🏠 508 Roman Road, Bow, London, E3 5LU

✉ bow@butlerandstag.com

www.butlerandstag.uk